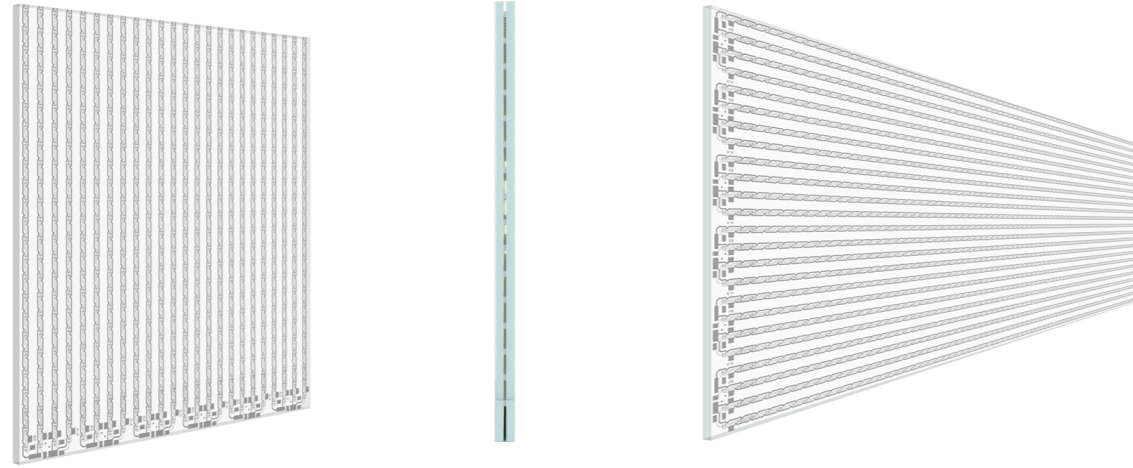


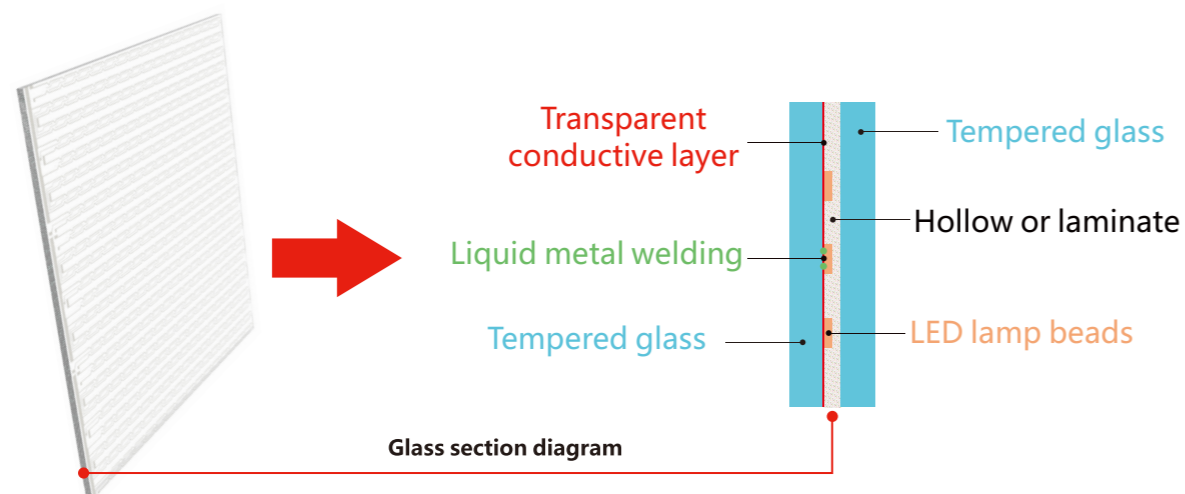
»» **Glass LED screen**



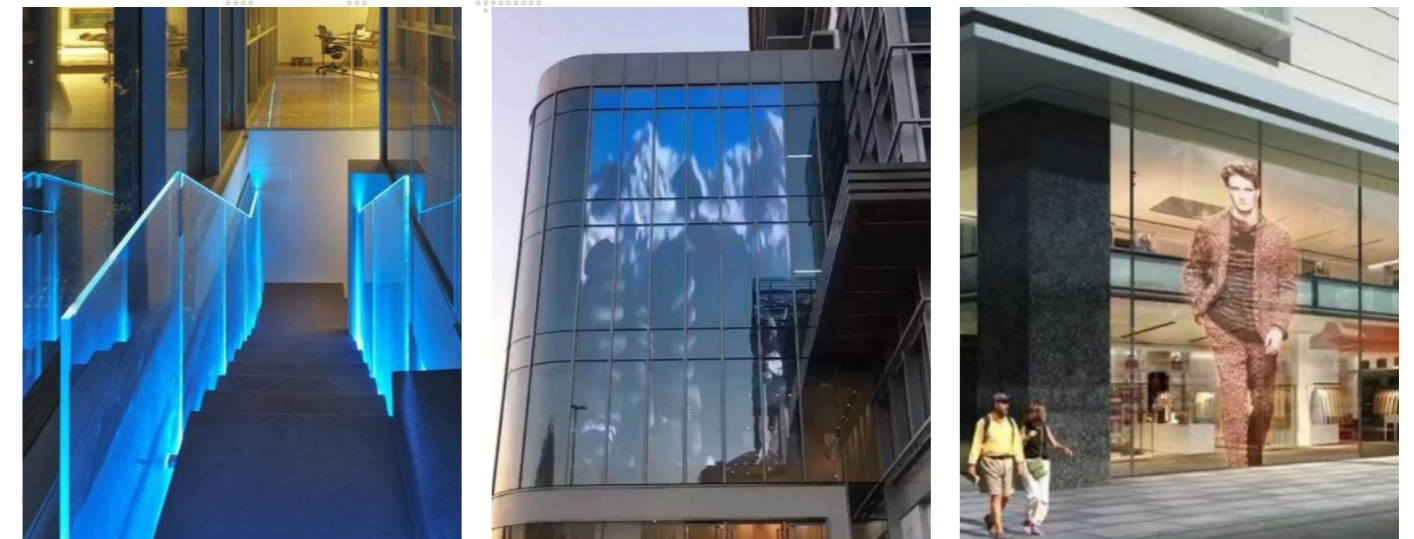
Model	Hot		Hot				
	P6	P7	P8	P10	P14	P15	P20
Pitch	6mm	7mm	8mm	10mm	14mm	15mm	20mm

- New material
(Armoured glass)
- Seamless splicing
- Good light
transmittance
- No color difference
- Laser
cold-light etching
- Remote power
feeding
- Good protective
performance

Structure of the product



Application



Guardrail

Curtain

Show window

Parameter

Model	P6	P7	P8	P10	P14	P15	P20
Pitch	6mm	7mm	8mm	10mm	14mm	15mm	20mm
Best Viewing Distance	27889dots/m ²	20449dots/m ²	15625dots/m ²	10000dots/m ²	5041dots/m ²	4489dots/m ²	2500dots/m ²
Pixel density	≥6m	≥7m	≥8m	≥10m	≥14m	≥15m	≥20m
Glass maximum size	1.8*3.8m						
Pixel composition	1R1G1B						
Brightness	≥2000cd/m ²						
Input voltage	110V / 220V						
Viewing Angle	H:160° V: 160°						
Permeability	≤98.9%						
Power	250-1000W / m ²						
Work environment	Temperature:-20~70°C ; Humidity: 10~90%						
Drive mode	Static state						
Control system	Nova / Colorlight						
Colour temperature	2000~15000						
Refresh Rate	3840Hz / 7680Hz						
Lifetime	100000H						
Customized Solutions	Non-standard specifications can be customized						